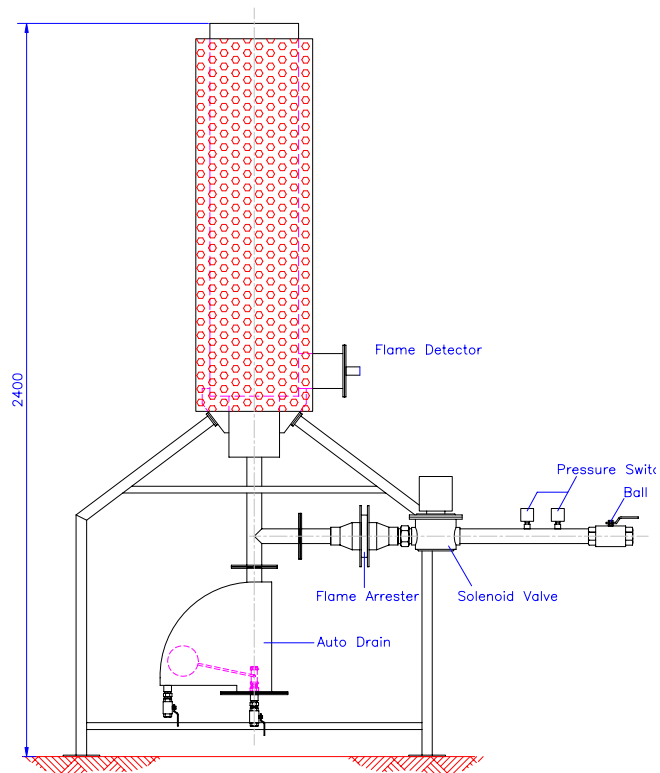




BKE COMBUSTION CONTROLS CO.,LTD.

website <http://www.bkeinter.com> , e-mail: bkeco@cscoms.com

100 CU.M/HR AUTOMATIC BIOGAS FLARE



Knock Down Type

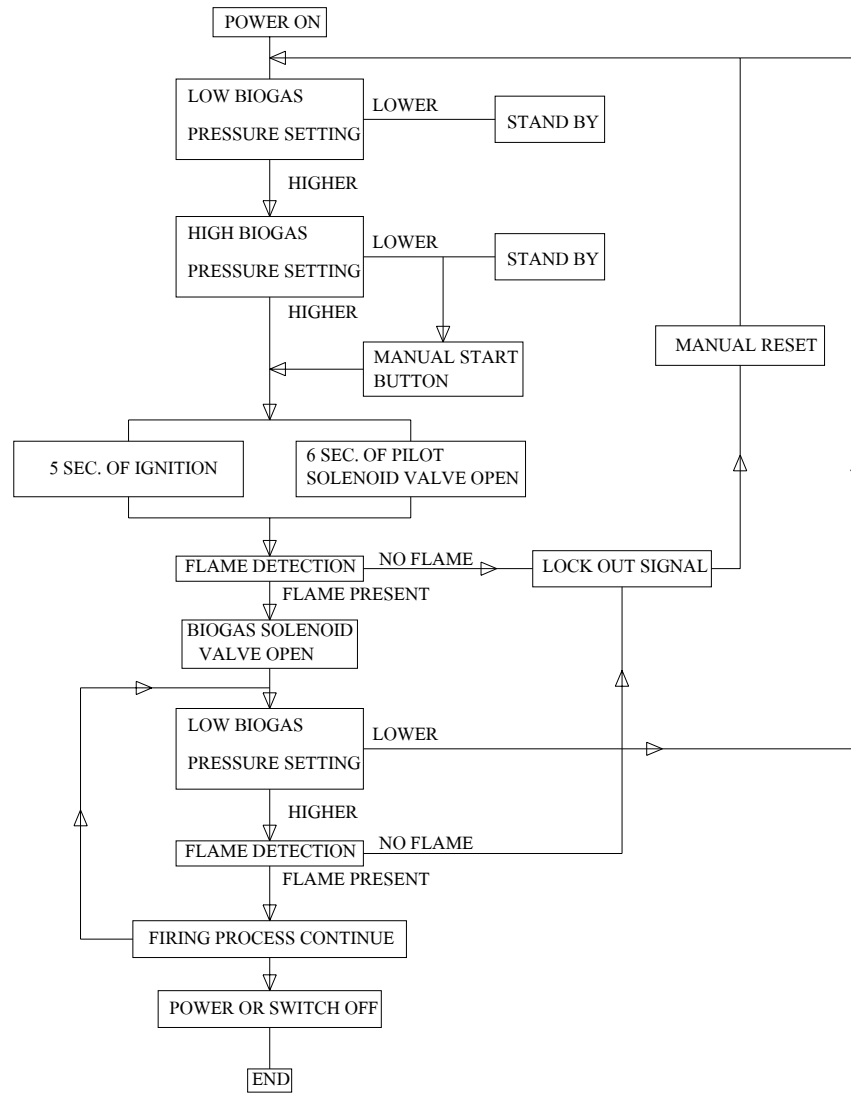
Light Weight

Automatic Operation

Standard Safety Function

TECHNICAL DATA

Fuel or waste gas	:	Biogas
Operating Pressure	:	15-50 mbar
Capacity	:	100 cu.m/hr (Max.) at 30 mBar
Height	:	2.4 m
Materials	:	Stainless Steel for Biogas Piping and Fire Tube Carbon Steel for Structure
Flame Detector	:	Flame Ionization Detector (FID)
Safety Shut off Valve	:	Stainless spring solenoid valve, European Standard
Ignition System	:	14000 Volt High pressure transformer
Power Supply	:	220 Volt, Single Phase, 50Hz
Control Panel	:	Stainless Steel with IP 65 lamp and switch
Start/Stop Sequence	:	Start automatically when supply biogas reach high pressure setting and stop when drop to low setting
Alarm signal	:	Lockout (flame out) alarm when flare needs flame
Back Fire Prevention	:	Stainless Steel Flame Arrester
Water removal	:	Automatic Drain



AUTOMATIC BIOGAS FLARE FLOWCHART